



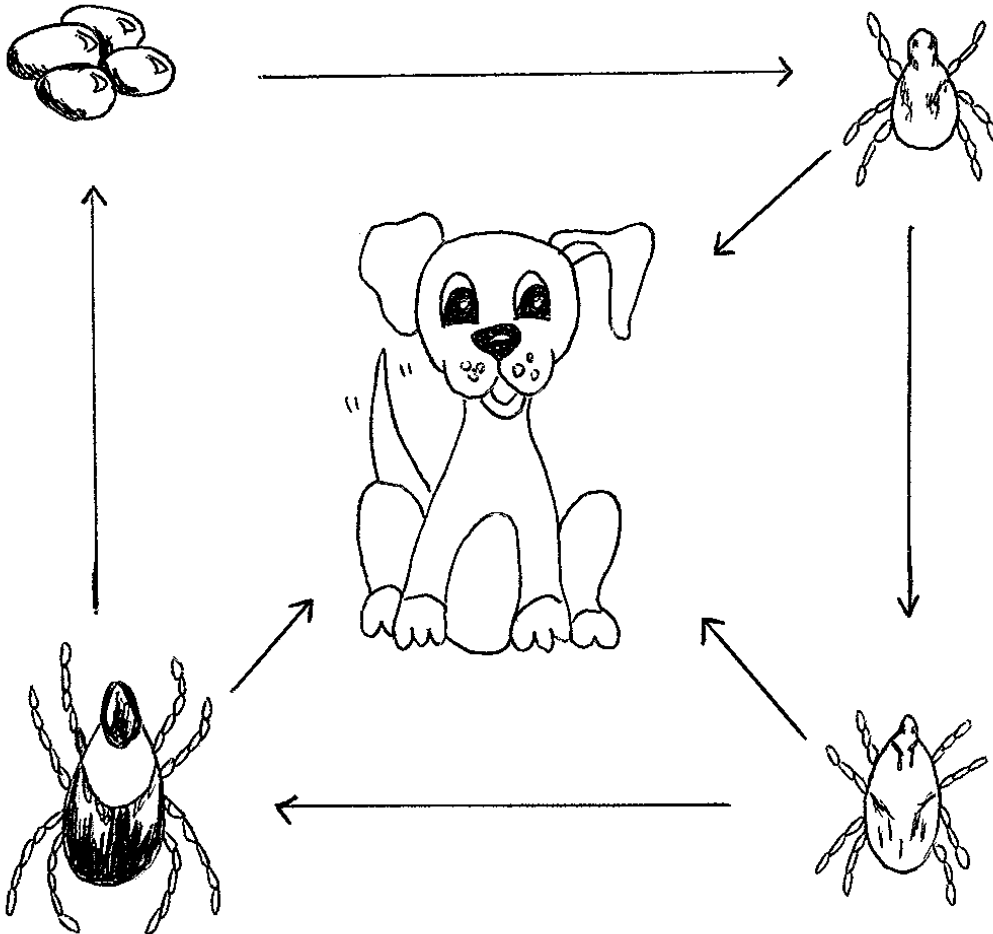
## The Tick Lifecycle

### Eggs

Several thousand eggs are laid into the environment

### Larvae

Searches for a host (often small mammals or birds), takes a blood meal then falls off into the environment and molts into the nymph stage



### Adult

Searches for a host (often larger mammals), takes a blood meal then falls off into the environment to lay eggs

### Nymph

Searches for a host (often small mammals), takes a blood meal then falls off into the environment and molts into adults