



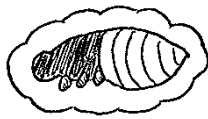
The Flea Lifecycle

Pupae

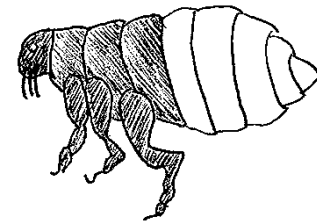
- The cocoon is sticky and becomes covered in debris
- May remain dormant for up to 1 year before hatching
- Makes up 10% of flea infestation

Adult Fleas

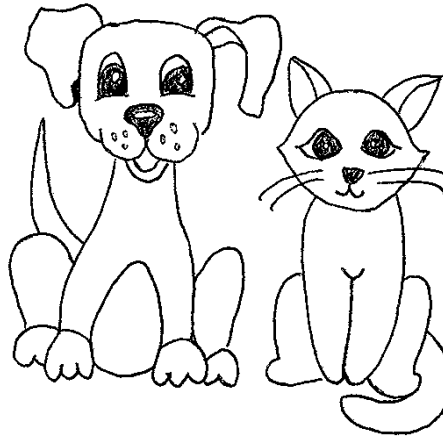
- Feeds on the host's blood and takes several blood meals a day
- Rarely leaves their host
- Makes up 5% of flea infestation



7 days-1 year



5-14 days



2 days



2-14 days



Larvae

- Feeds on flea dirt (adult flea feces), shed hair and skin particles
- Makes up 35% of flea infestation

Eggs

- Eggs fall into the environment
- Can have up to 50 eggs laid per day per female flea
- Makes up 50% of flea infestation