

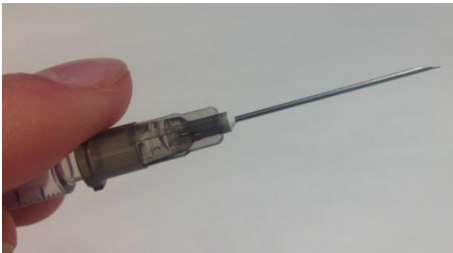


## Administering a Subcutaneous Injection

There are many medications, such as insulin to treat diabetes or cartrophen for joint health that are given under the skin. These medications can be given at home by owners, should they feel comfortable doing so.

### Needles

Needles are sharp, please be careful! Needles may be permanently attached to the syringe, like with insulin syringes, or can be removable like with pre-loaded syringes for cartrophen injections. All needles have a point at the end that is sharp, but becomes “burred”, or dull after use. This is why needles are meant for single use injections. Needles have a beveled edge. The beveled edge should point upwards for an injection to allow for better administration of the medication.



### Drawing up medication

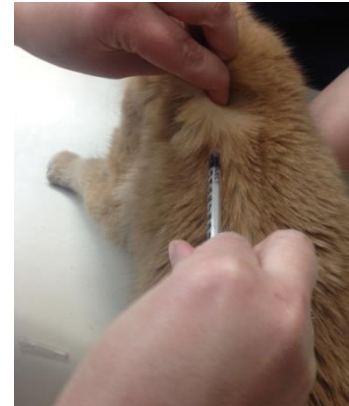
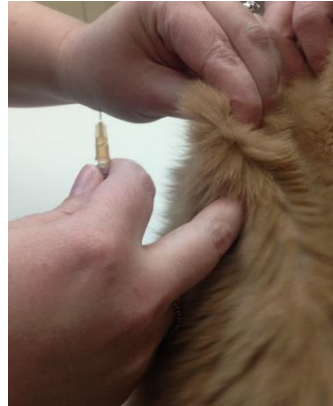
When drawing up insulin, slowly roll the vial between your palms. Draw up the medication into the syringe a little past the desired amount with the vial held upside down. Then push the excess medication back into the vial. This will allow any air bubbles to exit the syringe as they float to the top.

### Administering the injection technique #1

- Remove the needle cap
- With your non-dominant hand, lift the skin to create a “tent”
- Using your index finger of your dominant hand, find the “door” to the tent. This is where your injection will enter
- With your dominant hand, place the needle parallel to the animal’s body
- Hold the syringe with the bevel of the needle pointing upwards
- With confidence, insert the needle all the way to the hub into the “door” of the “tent”



- Aspirate back on the plunger to ensure negative pressure and no air is being drawn up
- Depress the plunger completely to administer the medication
- Pinch the skin around the needle and remove the needle



## Administering the injection technique #2

- Remove the needle cap
- With your dominant hand, place the needle parallel to the animal's body, close to the skin
- With your non-dominant hand, take the skin close to the needle and then pull it over the needle so the needle is inserted to the hub by the skin being pulled over it
- Aspirate back on the plunger to ensure negative pressure and no air is being aspirated
- Depress the plunger completely to administer the medication
- Pinch the skin around the needle and remove the needle



## Trouble shooting

If you get air when aspirating back on the plunger instead of negative pressure, this means the needle has gone through the skin and is outside the body again. This happens to all of us! Remove the needle and reposition.



4508 Wellington Rd.,  
Nanaimo, BC, V9T 2H3  
P 758-3985 . F 758-8207

---

Should you aspirate blood, remove the needle and reposition. Aspirating blood before giving a subcutaneous injection is very uncommon. Rarely, a small spot of blood can be seen on the fur afterwards if the needle may have gone through a small superficial vessel. Do not panic it is ok to happen.

Sharp needles should not go in the garbage but can be collected then dropped off at any pharmacy, human or veterinary hospital to be disposed of properly.

Please do not hesitate to contact us with any questions or concerns at (250-) 758-3985 or by email at [nveth@shaw.ca](mailto:nveth@shaw.ca)